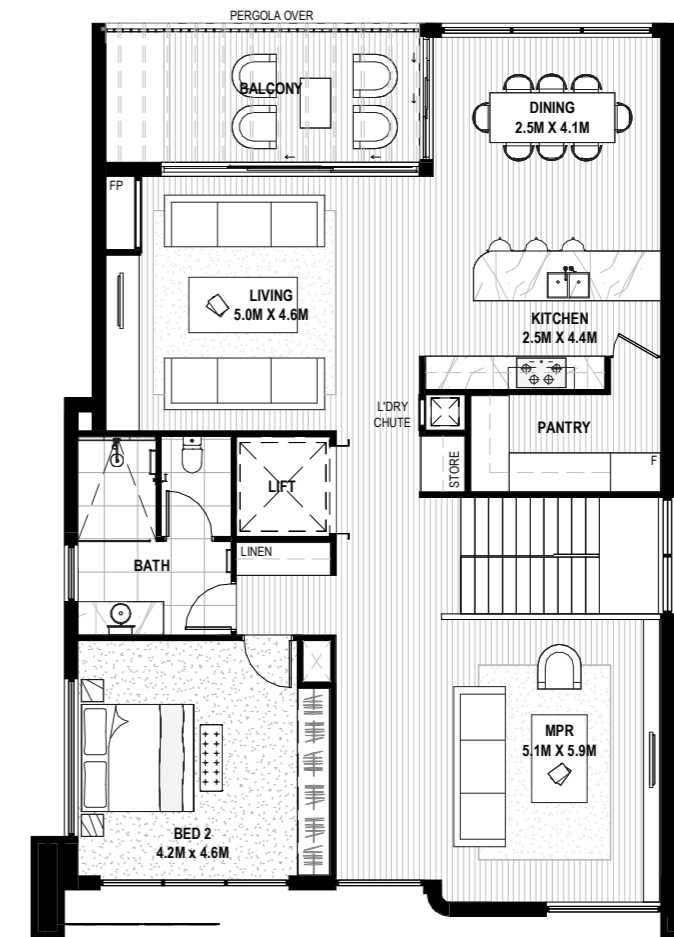


Ground Floor



First Floor




# Avondale

Ground Floor 188.25m<sup>2</sup>

First Floor 171m<sup>2</sup>

Total 359.25m<sup>2</sup> / 38.67 squares

-   
Beds  
3
-   
Bath  
3
-   
Living  
1
-   
Activity  
1
-   
Outdoor  
Living
-   
Garage  
2.5



Introducing our double-storey beauty, the Avondale. The luxury kitchen, with its high-end fixtures and walk-in pantry can be found adjacent to a spacious open-plan dining and lounge area, all seamlessly connected to the balcony boasting glorious views. On the ground floor is where you'll find the master suite with an impressively large walk-in robe and full-sized bathroom complete with separate shower and bath, the master also offers its very own private terrace. An unexpected alfresco delight. Together with your own chic internal lift to make access between the floors a breeze, the Avondale is the epitome of five-star over-50s living.